

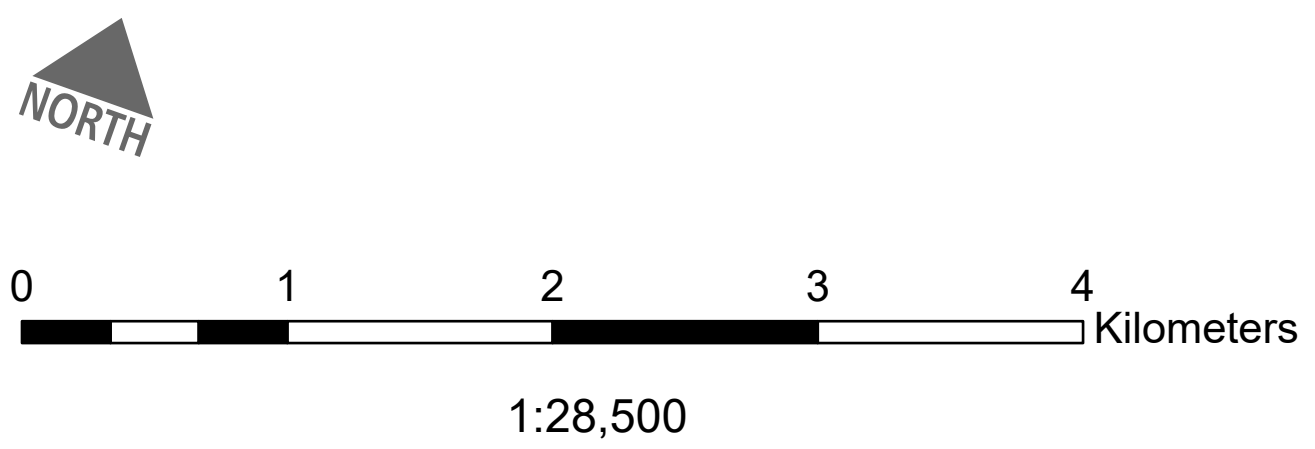
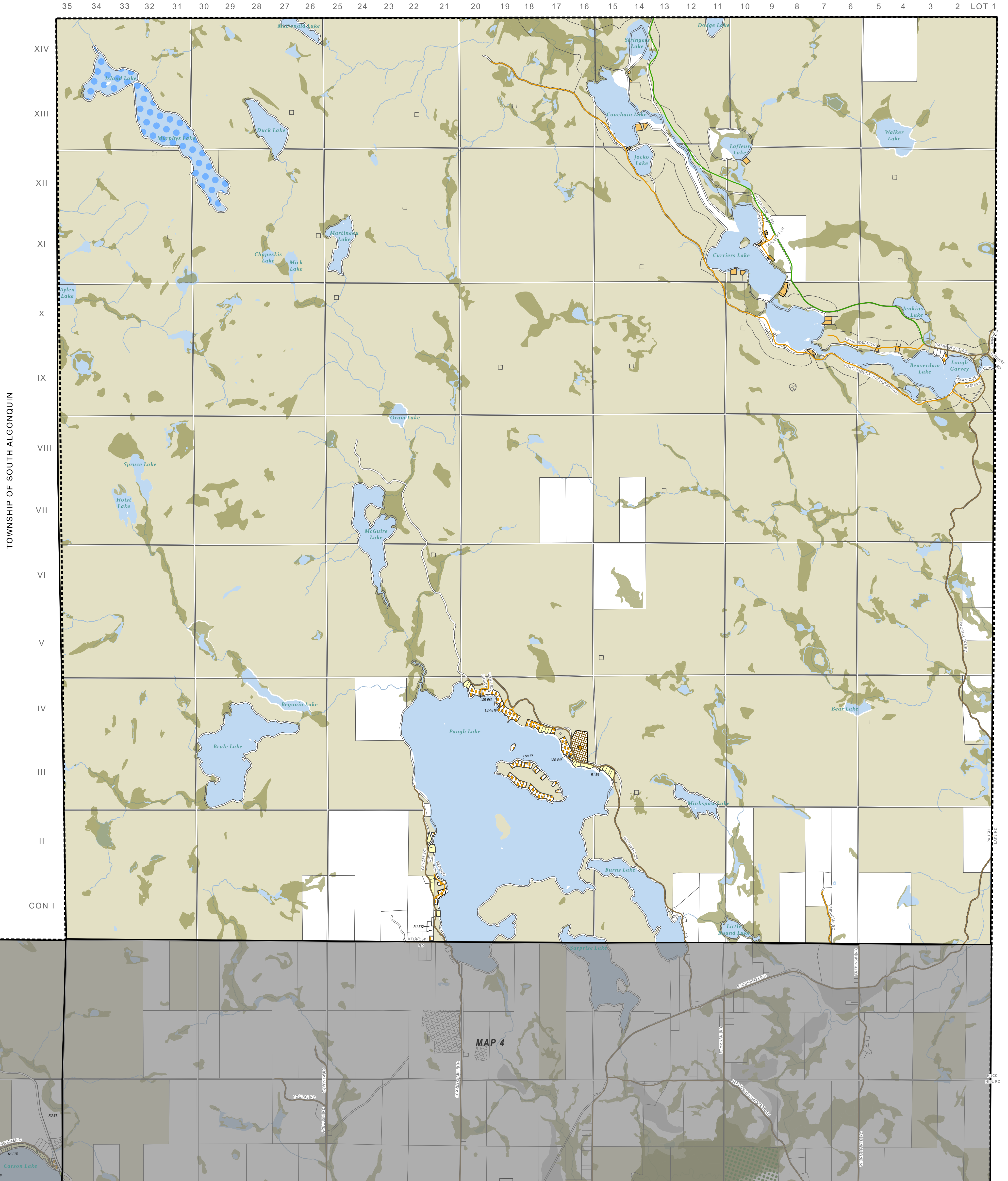


Township of Madawaska Valley

ZONING BY-LAW - SCHEDULE "A"

MAP 1 - GEOGRAPHIC TOWNSHIP OF BURNS

ALGONQUIN PARK



ZONES

RU - RURAL	C - COMMERCIAL	EP - ENVIRONMENTAL PROTECTION
R1 - RESIDENTIAL ONE	TC - TOURISM COMMERCIAL	OS - OPEN SPACE
R2 - RESIDENTIAL TWO	HC - HIGHWAY COMMERCIAL	PSW - PROVINCIALLY SIGNIFICANT WETLANDS
SR - SEASONAL RESIDENTIAL	GM - GENERAL INDUSTRIAL	EXTRACTIVE INDUSTRIAL
LSR - LIMITED SERVICE RESIDENTIAL	DM - DISPOSAL INDUSTRIAL ONE	EXTRACTIVE INDUSTRIAL RESERVE
SUR - SUBURBAN RESERVE	CF - COMMUNITY FACILITY	

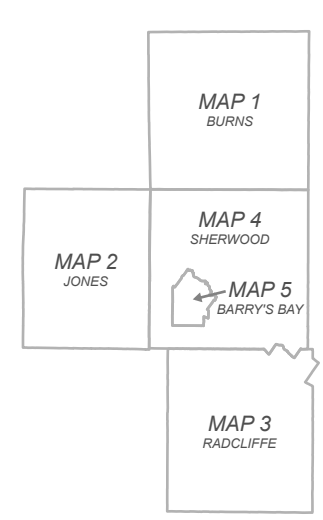
GENERAL

PROVINCIAL HIGHWAY	PRIVATE ROAD	AT-CAPACITY-LAKE	ACTIVE LANDFILL
COUNTY ROAD	FOREST ACCESS	OPEN WATER	INACTIVE LANDFILL
MUNICIPAL ROAD - YEAR-ROUND	COUNTY FOREST	FLOODPLAIN	
MUNICIPAL ROAD - SEASONAL	FLOODED LAND	CROWN LAND	

ISSUE DATE:
DRAFT FOR COUNCIL REVIEW
MARCH 2026



SCHEDULES PRODUCED BY JP2G CONSULTANTS INC. WITH DATA SUPPLIED BY THE COUNTY OF RENFREW AND MIDDLESEX. MAP SCHEDULES ARE NOT INTENDED TO BE USED FOR LEGAL PURPOSES OR TO IDENTIFY EXACT LOCATIONS OF MAP ELEMENTS. VERIFICATION AND SURVEY OF EXISTING CONDITIONS IS REQUIRED TO CONFIRM ACTUAL LOCATION OF EXISTING CONDITIONS AND/OR PROPOSED ELEMENTS.



TOWNSHIP OF KILLALOE, HAGGARTY AND RICHARDS