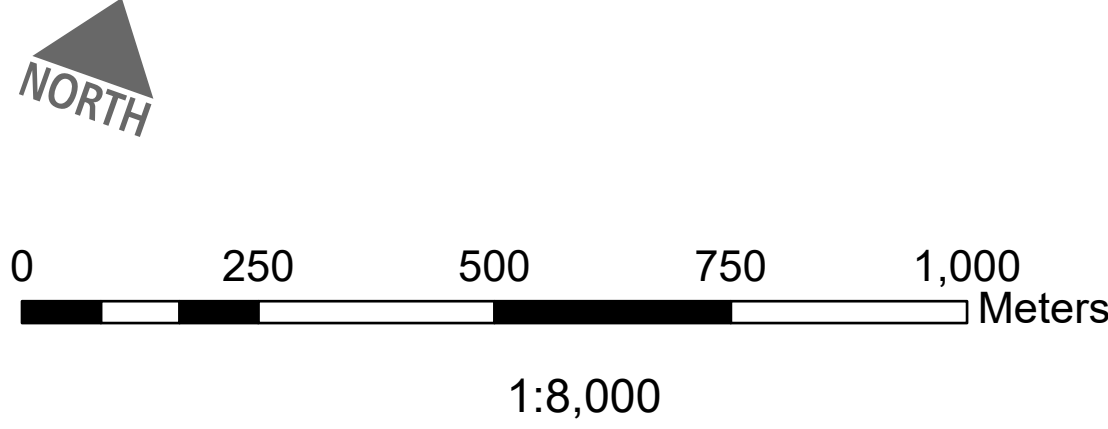
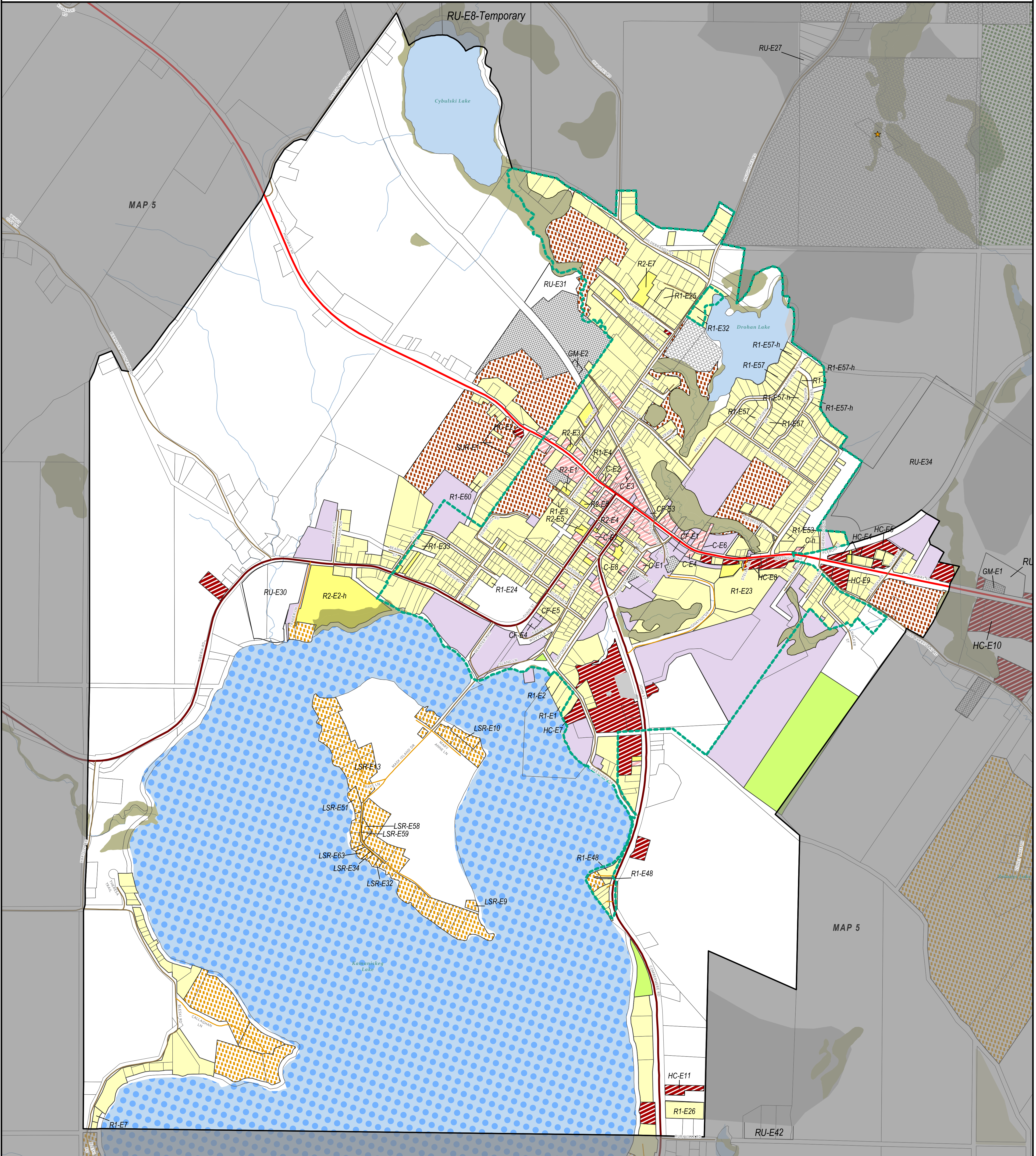




Township of Madawaska Valley

ZONING BY-LAW - SCHEDULE "A"

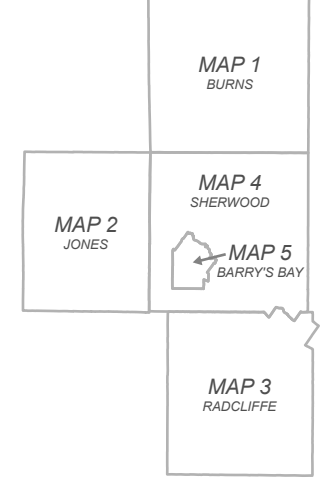
MAP 5 - BARRY'S BAY VILLAGE & PORTION OF GEOGRAPHIC TOWNSHIP OF SHERWOOD



ISSUE DATE:
DRAFT FOR COUNCIL REVIEW
MARCH 2026

Jp2g Consultants Inc.
ENGINEERS - PLANNERS - PROJECT MANAGERS

SCHEDULES PRODUCED BY JP2G CONSULTANTS INC. WITH DATA SUPPLIED BY THE COUNTY OF RENFREW AND MINDENNF. MAP SCHEDULES ARE NOT INTENDED TO BE USED FOR LEGAL PURPOSES OR TO IDENTIFY EXACT LOCATIONS OF MAP ELEMENTS. VERIFICATION AND SURVEY OF EXISTING CONDITIONS IS REQUIRED TO CONFIRM ACTUAL LOCATION OF EXISTING CONDITIONS AND/OR PROPOSED ELEMENTS.



ZONES

RU - RURAL	C - COMMERCIAL	EP - ENVIRONMENTAL PROTECTION
R1 - RESIDENTIAL ONE	TC - TOURISM COMMERCIAL	OS - OPEN SPACE
R2 - RESIDENTIAL TWO	HC - HIGHWAY COMMERCIAL	PSW - PROVINCIALLY SIGNIFICANT WETLANDS
SR - SEASONAL RESIDENTIAL	GM - GENERAL INDUSTRIAL	EXTRACTIVE INDUSTRIAL
LSR - LIMITED SERVICE RESIDENTIAL	DM - DISPOSAL INDUSTRIAL ONE	EXTRACTIVE INDUSTRIAL RESERVE
SUR - SUBURBAN RESERVE	CF - COMMUNITY FACILITY	

GENERAL

PROVINCIAL HIGHWAY	MUNICIPAL ROAD - SEASONAL	COUNTY FOREST	OPEN WATER	ACTIVE LANDFILL
COUNTY ROAD	PRIVATE ROAD	FLOODED LAND	FLOODPLAIN	INACTIVE LANDFILL
MUNICIPAL ROAD - YEAR-ROUND	FOREST ACCESS	AT-CAPACITY-LAKE	CROWN LAND	VILLAGE COMMUNITY