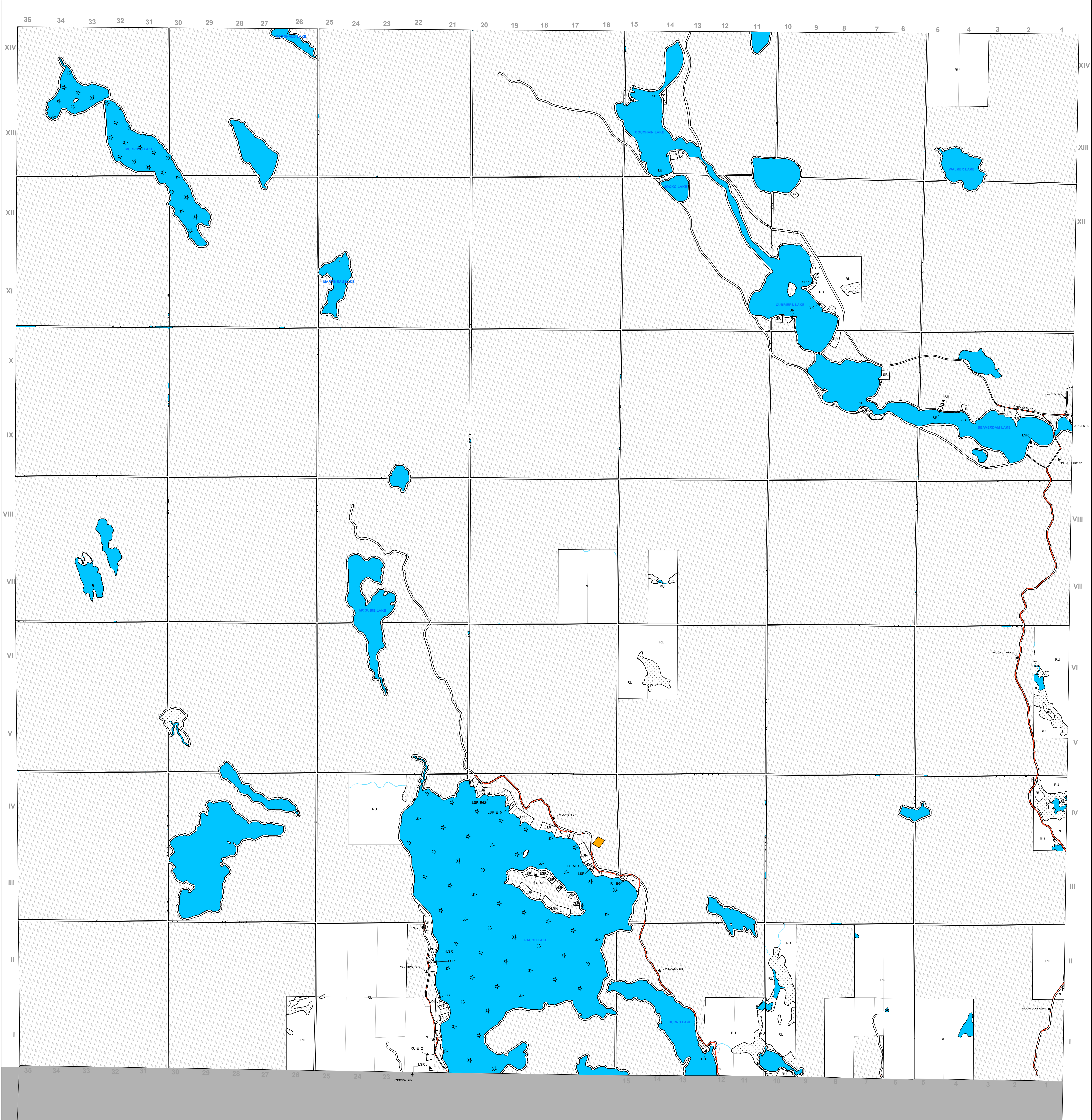


TOWNSHIP OF MADAWASKA VALLEY ZONING BY-LAW  
SCHEDULE "A" (Map 1)  
(Geographic Township of Burns)

MAP 1

MAP 1



R1	Residential One	CFR	County Forest
R2	Residential Two		Crown
LSR	Limited Service Residential		Flooded Area
SR	Seasonal Residential		Environmental Protection (EP)
C	Commercial		Extractive Industrial (EM)
HC	Highway Commercial		Extractive Industrial Reserve (EMR)
TC	Tourism Commercial		Provincially Significant Wetlands (PSW)
GM	General Industrial		Areas of Natural and Scientific Interest (ANSI)
DM1	Disposal Industrial One		Open Water
DM2	Disposal Industrial Two		Sensitive Lake
RU	Rural		Active Waste Disposal Site on Crown Land
CF	Community Facility		Inactive Waste Disposal Site
OS	Open Space		Water Course
SUR	Suburban Reserve		County Road
-h	Holding Zone		Provincial Road
-E1	Exception One (Numbered consecutively for each respective zone classification e.g. RU-E1, RU-E2, etc.)		Municipal Maintained Year-Round Road
			Municipal Seasonally Maintained

This is Schedule "A" to By-Law No. 2006-26  
Passed the 1st day of MAY, 20 06.

Signatures of the Signing Officers:



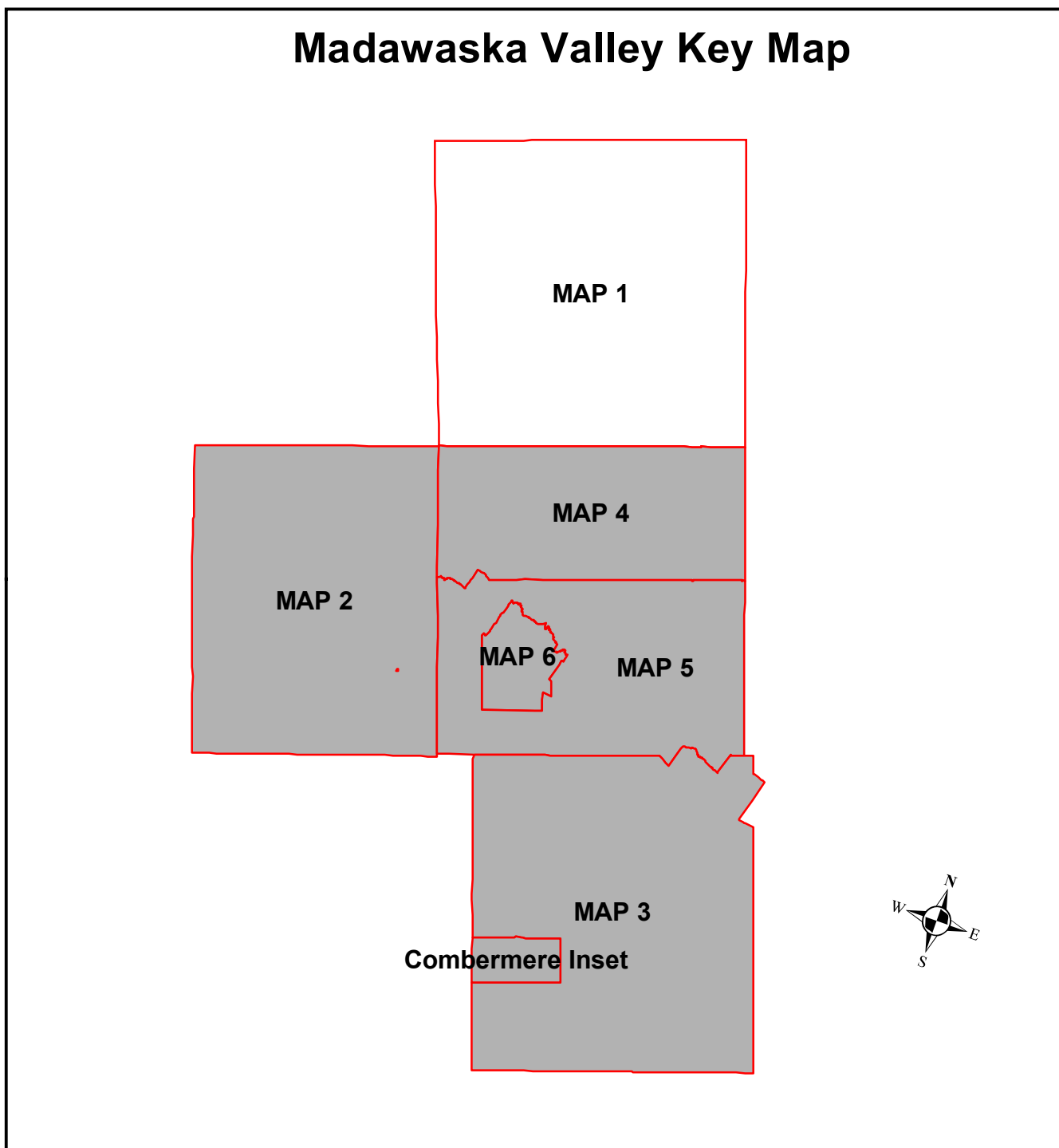
Reeve

ACTING CHAIRPERSON

CAO/Clerk



Consolidated Dated  
Housekeeping Bylaw Consolidation - May 2, 2011  
June 2, 2020



Produced by the County of Renfrew Development and Property Department  
under licence with the Ontario Ministry of Natural Resources  
© 2006, Queen's Printer for Ontario  
This map is illustrative only. Do not rely on it as being a precise  
indicator of routes, locations of features, nor as a guide to navigation.