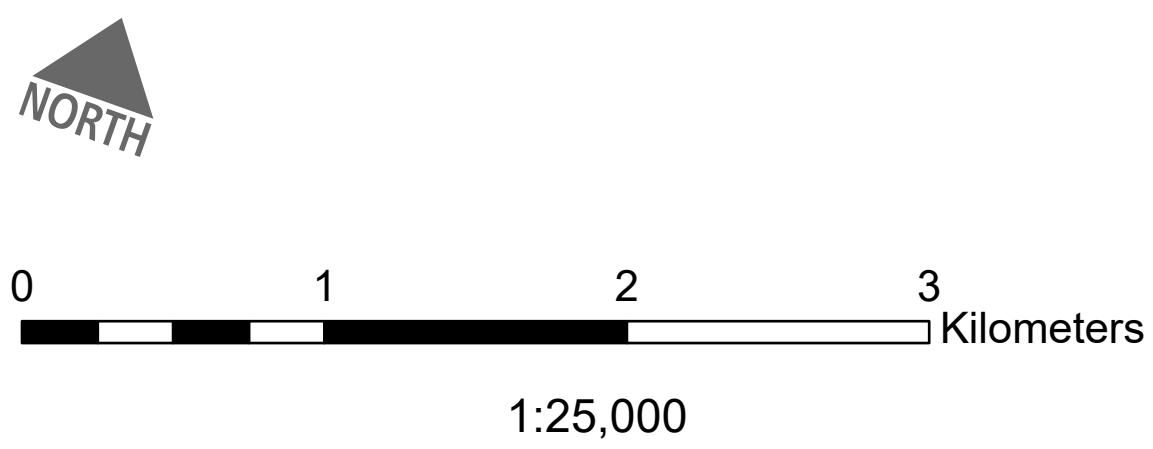
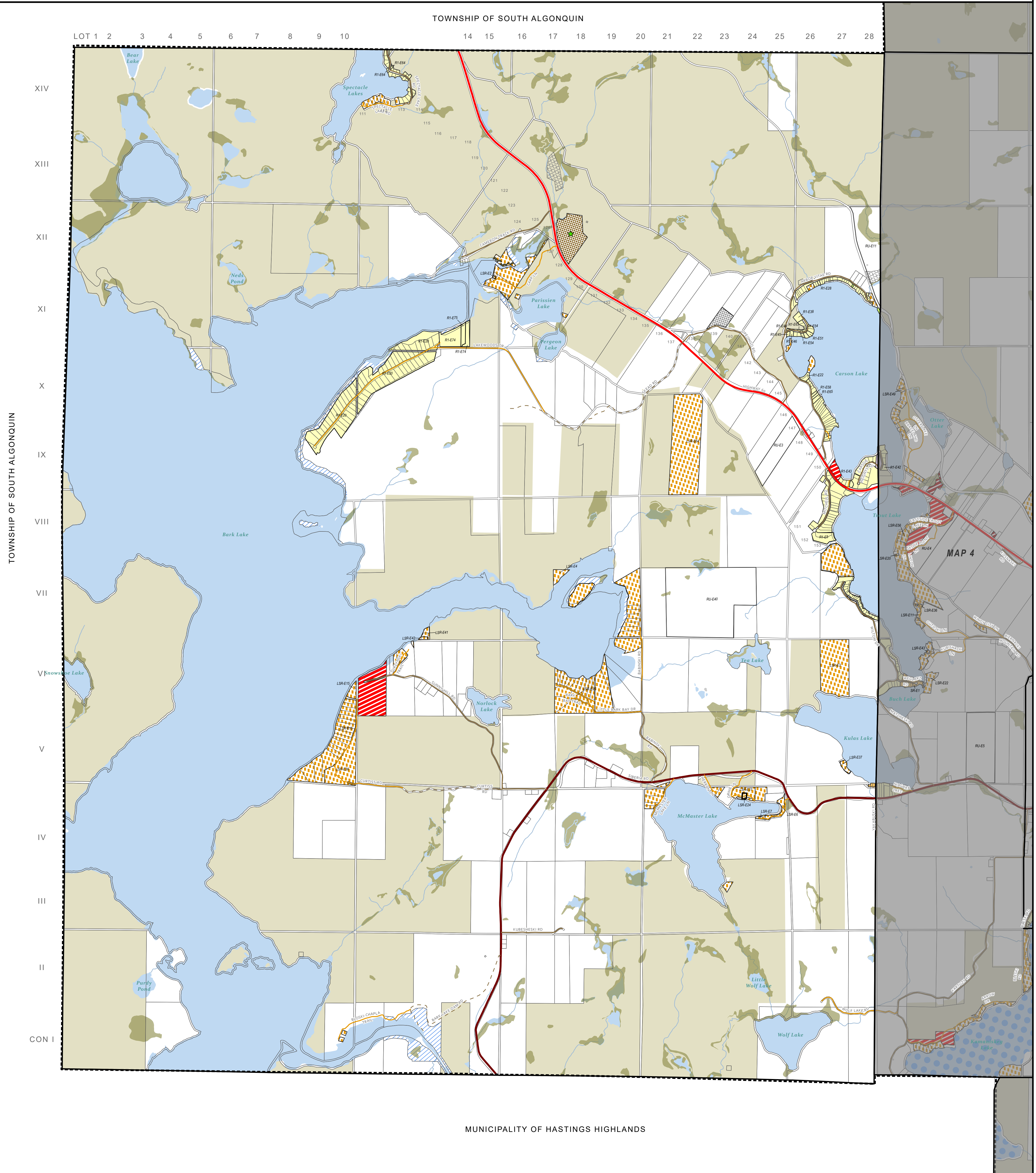




Township of Madawaska Valley

ZONING BY-LAW - SCHEDULE "A"

MAP 2 - GEOGRAPHIC TOWNSHIP OF JONES



ZONES

| | | |
|-----------------------------------|------------------------------|---|
| RU - RURAL | C - COMMERCIAL | EP - ENVIRONMENTAL PROTECTION |
| R1 - RESIDENTIAL ONE | TC - TOURISM COMMERCIAL | OS - OPEN SPACE |
| R2 - RESIDENTIAL TWO | HC - HIGHWAY COMMERCIAL | PSW - PROVINCIALLY SIGNIFICANT WETLANDS |
| SR - SEASONAL RESIDENTIAL | GM - GENERAL INDUSTRIAL | EXTRACTIVE INDUSTRIAL |
| LSR - LIMITED SERVICE RESIDENTIAL | DM - DISPOSAL INDUSTRIAL ONE | EXTRACTIVE INDUSTRIAL RESERVE |
| SUR - SUBURBAN RESERVE | CF - COMMUNITY FACILITY | |

GENERAL

| | | | |
|-----------------------------|---------------|------------------|-------------------|
| PROVINCIAL HIGHWAY | PRIVATE ROAD | AT-CAPACITY LAKE | ACTIVE LANDFILL |
| COUNTY ROAD | FOREST ACCESS | OPEN WATER | INACTIVE LANDFILL |
| MUNICIPAL ROAD - YEAR-ROUND | COUNTY FOREST | FLOODPLAIN | |
| MUNICIPAL ROAD - SEASONAL | FLOODED LAND | CROWN LAND | |

ISSUE DATE:
DRAFT FOR COUNCIL REVIEW
MARCH 2026

Jp2g Consultants Inc.
ENGINEERS - PLANNERS - PROJECT MANAGERS

SCHEDULES PRODUCED BY JP2G CONSULTANTS INC. WITH DATA SUPPLIED BY THE COUNTY OF RENFREW AND MINDENURF. MAP SCHEDULES ARE NOT INTENDED TO BE USED FOR LEGAL PURPOSES OR TO IDENTIFY EXACT LOCATIONS OF MAP ELEMENTS. VERIFICATION AND SURVEY OF EXISTING CONDITIONS IS REQUIRED TO CONFIRM ACTUAL LOCATION OF EXISTING CONDITIONS AND/OR PROPOSED ELEMENTS.

