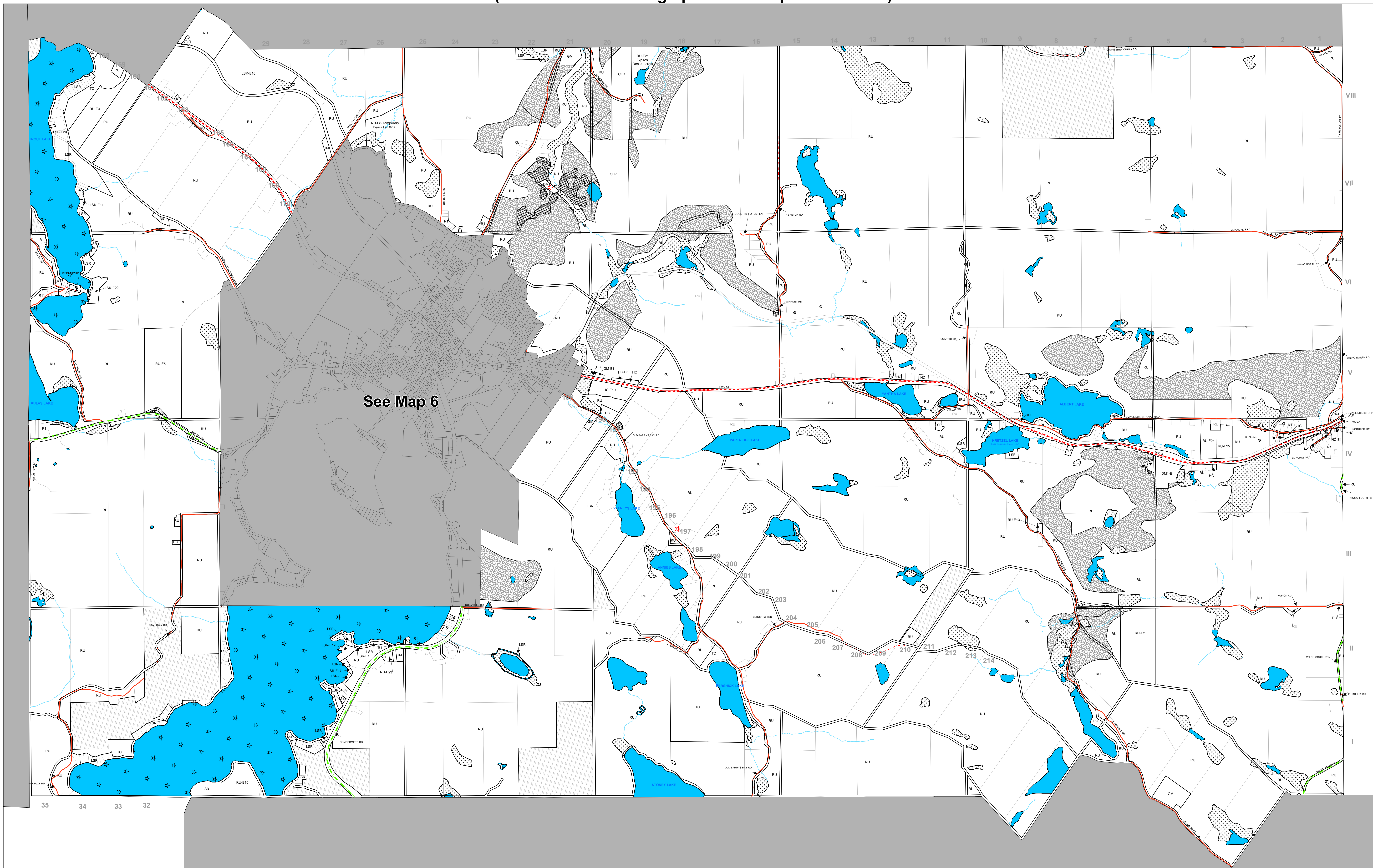


# TOWNSHIP OF MADAWASKA VALLEY ZONING BY-LAW SCHEDULE "A" (Map 5) (South Half of the Geographic Township of Sherwood)



R1	Residential One	DM1	Disposal Industrial One	CFR	County Forest
R2	Residential Two	DM2	Disposal Industrial Two	[Symbol]	Crown
LSR	Limited Service Residential	RU	Rural	[Symbol]	Flooded Area
SR	Seasonal Residential	CF	Community Facility	[Symbol]	Environmental Protection (EP)
C	Commercial	OS	Open Space	[Symbol]	Extractive Industrial (EM)
HC	Highway Commercial	SUR	Suburban Reserve	[Symbol]	Extractive Industrial Reserve (EMR)
TC	Tourism Commercial	-h	Holding Zone	[Symbol]	Provincially Significant Wetlands (PSW)
GM	General Industrial	-E1	Exception One ( Numbered consecutively for each respective zone classification e.g. RU-E1, RU-E2, etc.)	[Symbol]	Areas of Natural and Scientific Interest (ANSI)

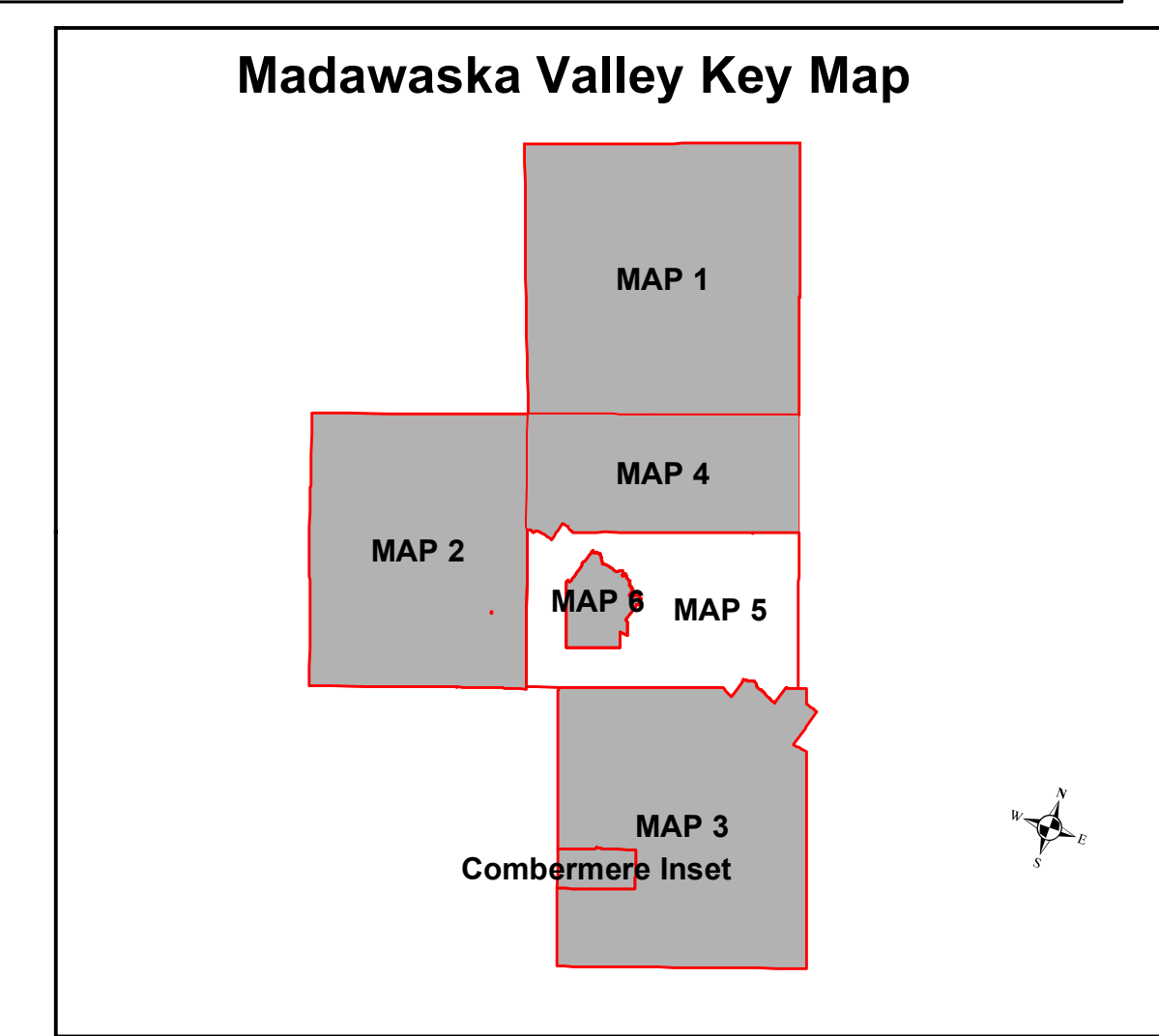
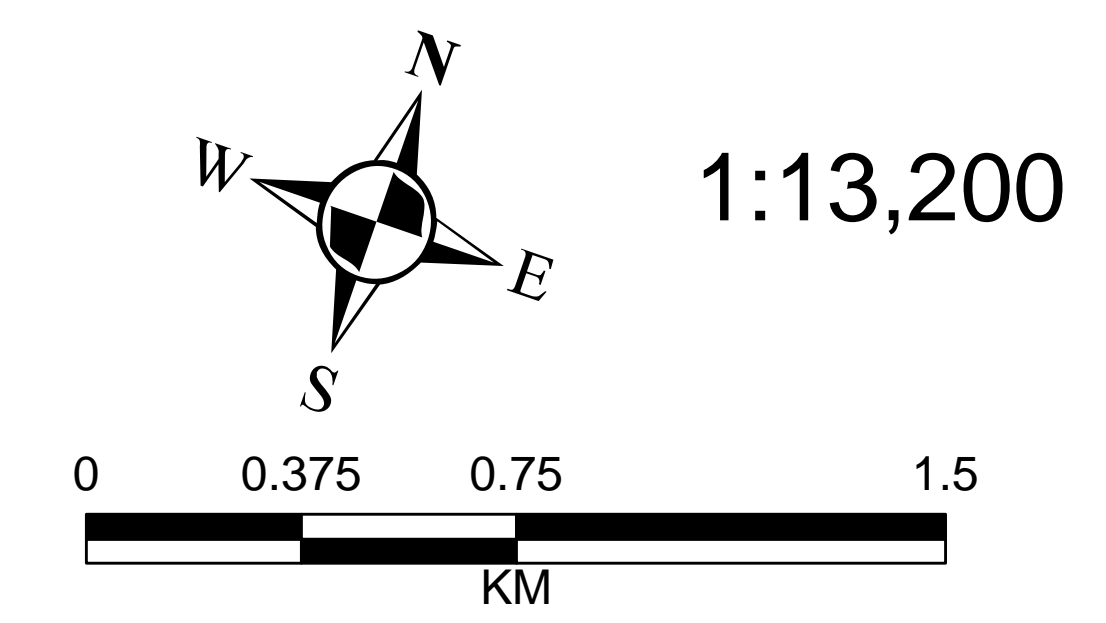
[Symbol]	Open Water
[Symbol]	Sensitive Lake
[Symbol]	Active Waste Disposal Site on Crown Land
[Symbol]	Inactive Waste Disposal Site
[Symbol]	Water Course
[Symbol]	County Road
[Symbol]	Provincial Road
[Symbol]	Municipal Maintained Year-Round Road
[Symbol]	Municipal Seasonally Maintained

This is Schedule "A" to By-Law No. 2006-26  
Passed the 3<sup>rd</sup> day of MAY, 2006

Signatures of the Signing Officers:  
 [Signature] Reeve  
 [Signature] CAO/Clerk  
 Dennis Heston  
 ACTING CHAIRPERSON



Consolidated Dated  
Housekeeping Bylaw Consolidation - May 2, 2011  
April 18, 2011



Produced by the County of Renfrew Development and Property Department under licence with the Ontario Ministry of Natural Resources © 2006, Queen's Printer for Ontario  
This map is illustrative only. Do not rely on it as being a precise indicator of routes, locations of features, nor as a guide to navigation.